



## KEEP PLAYING!

Extend the fun of Neighborhood Sounds Bingo and help all of your child's natural abilities blossom with these do-together activities.



### DISCOVER

• Spread out all the bingo cards and practice counting. Take turns picking a picture, then counting all the places this picture appears.

• Make a mega game of Neighborhood Sounds Bingo. Put all four bingo cards together in a square. Divide the tokens between two players: One player is green, and the other player is orange. On your turn, press the button to hear a sound, and place tokens on all the pictures that match this sound. The first player to get three in a row wins.

### PERFORM

• Take one of the bingo cards on a walk in your own neighborhood. See how many of the sounds you hear. Now make these sounds yourself!

• The next time you go on a walk around the neighborhood, play a version of I Spy where you look for things that make sounds. For example, "I spy with my little eye something that goes Woof! Woof!"



### CREATE

• Spread out all the bingo cards and practice matching colors. Take turns picking a color, then hunting for all the pictures that include this color.

• Sit outside your house or go for a listening walk around your neighborhood. Draw pictures of some of the things you hear.



### CONNECT

• Talk about the objects in the pictures. Point to them and ask your child to name them. What is his or her favorite thing?

• Look at the pictures and talk about what you can see and hear in your neighborhood. Tell your child about some of the sounds you remember from when you were growing up.



For more fun, visit [cranium.com](http://cranium.com)

© 2008 CRANIUM, INC. ALL RIGHTS RESERVED. ® & ™ ARE TRADEMARKS OF CRANIUM, INC.

100e01

## TROUBLESHOOTING

Are you having trouble with your bingo radio? Try these tips!

### If your radio...

Isn't loud enough...

Sounds garbled...

Won't turn on...

Stops in the middle of a game...

### Try this!

Adjust the volume with the switch on the back.

Install three new AA batteries.

Install three new AA batteries.

Turn your radio off and then on again.

Install three new AA batteries.

If you've tried all these steps and you're still having trouble, go to [cranium.com/support](http://cranium.com/support) or call **1-877-CRANIUM**. We value your input, and we'll do our best to help!

WARNING: Changes or modifications to this unit not expressly approved by the party responsible for compliance could void the user's authority to operate the equipment.

NOTE: This equipment has been tested and found to comply with the limits for a Class B digital device, pursuant to Part 15 of the FCC rules and EMC regulations. Conforms to the requirements of EN 50088. These limits are designed to provide reasonable protection against harmful interference in a residential installation. This equipment generates, uses, and can radiate radio frequency energy and, if not installed and used in accordance with the instructions, may cause harmful interference to radio communications. However, there is no guarantee that interference will not occur in a particular installation. If this equipment does cause harmful interference to radio or television reception, which can be determined by turning the equipment off and on, the user is encouraged to try to correct the interference by one or more of the following measures:

- Reorient or relocate the receiving antenna.
- Increase the separation between the equipment and receiver.
- Consult the dealer or an experienced radio/TV technician for help.

### CHANGING THE BATTERIES

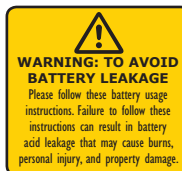
Your bingo radio needs three AA batteries. Follow these steps to install the batteries. Batteries must be installed and removed by an adult.

1. Unscrew the battery cover on the bottom of the radio.
2. Insert the batteries as indicated.
3. Replace the battery cover and tighten the screw.

### BATTERY SAFETY:

- Do not put the batteries in backwards. Positive (+) and negative (-) ends must be inserted in the correct directions following the polarity (+/-) diagram in the battery compartment.
- Do not mix alkaline, standard (carbon-zinc), or rechargeable (nickel-cadmium) batteries.
- Only batteries of the same or equivalent type as recommended are to be used.
- Do not mix old and new batteries.
- Rechargeable batteries must be removed before recharging.
- Rechargeable batteries must be recharged by an adult only.
- Batteries must be installed and removed by an adult only.
- Remove exhausted batteries and dispose of them properly.
- Do not try to recharge non-rechargeable batteries.
- The supply terminals are not to be short-circuited.

**WARNING:**  
CHOKING HAZARD - Small parts.  
Not for children under 3 years.



# LET'S PLAY neighborhood sounds bingo GAME



Can you match the neighborhood sounds to the pictures on your card?

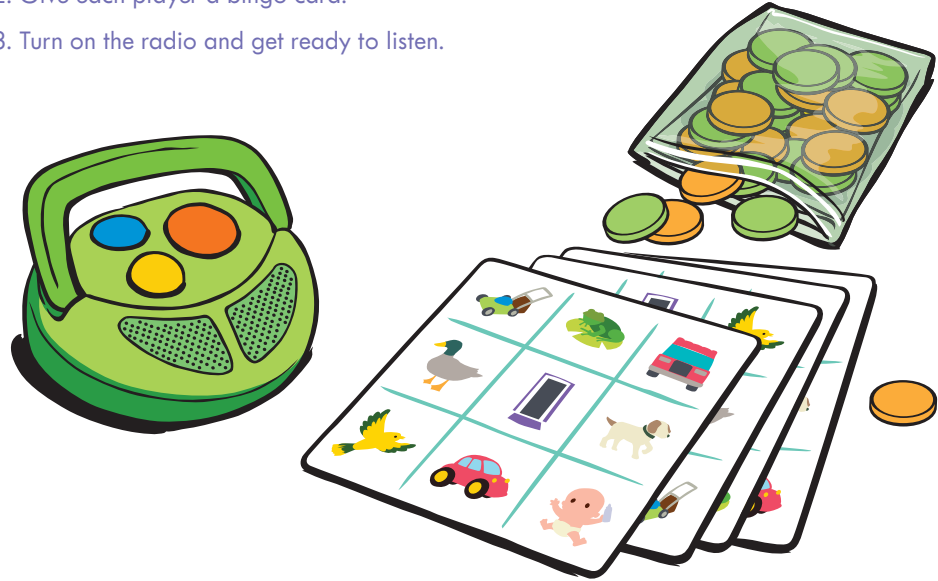


## OBJECT OF THE GAME

Be the first player to get three in a row and shout "BINGO!"

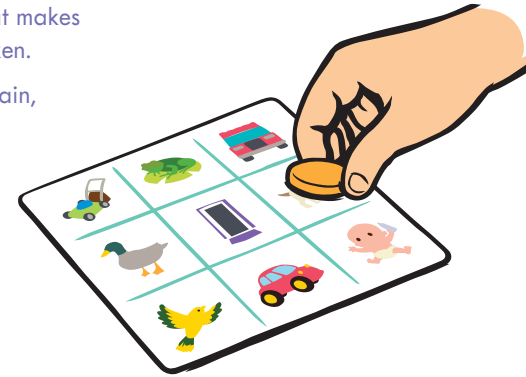
## GET READY

1. Set out the bingo radio and tokens.
2. Give each player a bingo card.
3. Turn on the radio and get ready to listen.



## HOW TO PLAY

1. Press the orange button and listen to the neighborhood sound.
2. If your card has a picture of what makes this sound, cover the spot with a token.
3. If you want to hear the sound again, press the yellow button.

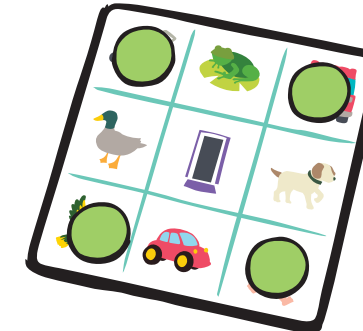


## HOW TO WIN

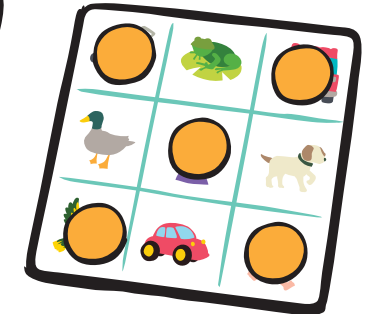
The first player to get three in a row – across, down, or diagonally – wins. Shout "BINGO!" and press the blue button for a special celebration message!

## TRY THIS!

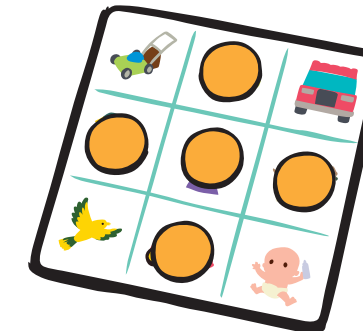
There are lots of ways to play bingo:



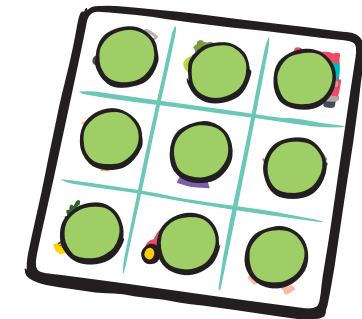
Cover the corners.



Make an X.



Make a plus sign.



Cover your whole card!